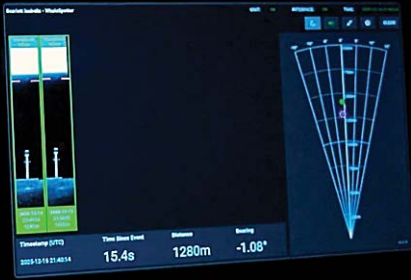


# WHALESPOTTER

Verified 24/7  
Marine Mammal  
Detection

Detect.  
Alert.  
Avoid.<sup>SM</sup>

See what lies ahead.  
Protect what lives below.<sup>SM</sup>



WhaleSpotter delivers real-time whale detection and awareness to help prevent vessel strikes and support safer operations at sea. Using a camera-based system with thermal imaging and scientifically validated detection models, WhaleSpotter identifies whales far enough ahead of large vessels to give bridge crews time to slow, steer, or adjust course—reducing strike risk before a whale enters harm's way.

Through a **Detect.Alert. Avoid.<sup>SM</sup>** approach, WhaleSpotter combines advanced AI with expert human verification to deliver dependable alerts within seconds. Field deployments have demonstrated reliable detection of whale surfacings several kilometers away, providing crews with actionable time to respond in real-world conditions (*Woods Hole Oceanographic Institution*).

The technology has been validated through extensive at-sea research and shown to outperform trained human observers across polar, temperate, and subtropical environments, under a wide range of sea states (*Journal of Oceanic and Atmospheric Technology*).

Today, WhaleSpotter is deployed on container vessels, ferries, cruise ships, research vessels, and land-based vantage points. Across this growing network, more than 50,000 marine mammal detections were recorded in 2024 (*BioGraphic*), helping crews make informed decisions to minimize strike risk and operate more responsibly.

Developed at Woods Hole Oceanographic Institution, WhaleSpotter reflects more than a decade of peer-reviewed innovation in thermal-imaging-based whale detection. WhaleSpotter seeks to strengthen ocean stewardship and complement existing conservation initiatives, especially as commercial shipping overlaps the majority of known whale habitats and unmanaged risk remains high (*Science; International Whaling Commission*).

**130,000+** marine mammal detections recorded in 2025

Beyond whales, WhaleSpotter can also detect other surface-breaching marine life, including seabirds, sharks, and large fish. As global efforts advance under the UN High Seas (BBNJ) ocean biodiversity agreement, these real-time observations can help support offshore monitoring, migration research, and protected-area management.



WhaleSpotter is the world's leading, long-range, AI-powered, expert-verified, whale detection and noise impact mitigation system, delivering 24/7 real-time alerts to marine operators.

Marine Mammal Detection  
up to 4 Nautical Miles

Daytime & Nighttime  
Operation

Real-time Expert Verification  
Within Seconds of Detection

Whales Detected  
250,000+

Deployed Globally Since  
2020

Hours at Sea  
417,000+

Nautical Miles Protected  
800,000+



The technology is remarkable, and now refined to meet our zero-false-alert requirements. Our crews are enthusiastic about this new tool and are already using it to help protect whales.

—Matt Cox | Chairman and CEO | Matson Navigation

## TECHNICAL SPECS



Fully Gimballed



Color Thermal Cameras



24° Field of View



1–2 NM Detection Ranges  
(up to 7 NM)



Operational up to Sea State 6



8.6kg, 43 cm x 38 cm x 20 cm  
19lbs, 17in. x 15in. x 8in.